

LANDSCAPE DESIGN CONCEPT

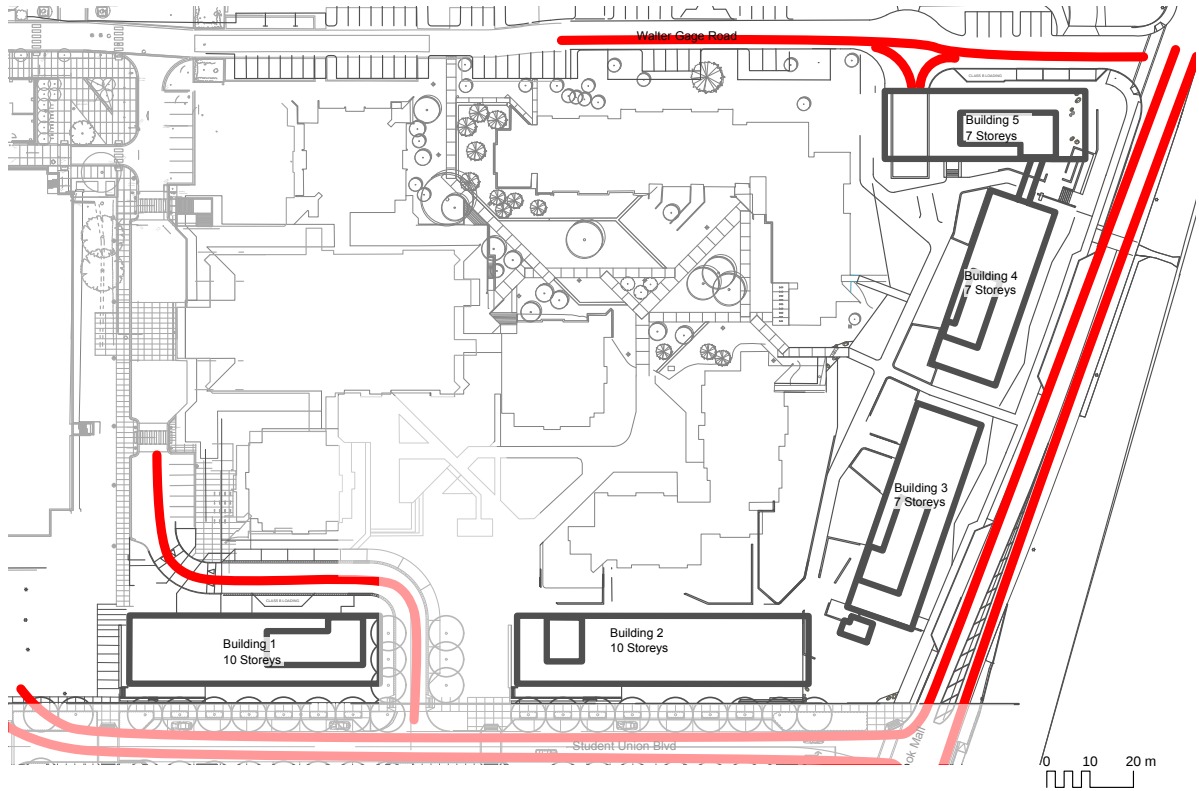
THIS INFILL PROJECT IS A TRANSITION ZONE BETWEEN ESTABLISHED EXISTING BUILDINGS AND LANDSCAPE, AND AN UPGRADED WESBROOK MALL, WHICH IS A KEY TRAVEL CORRIDOR. AS SUCH IT ENHABITS THE SAME CONDITIONS AS THE EDGE OF A FOREST OR THE EDGE OF THE OCEAN, WHERE THE LARGER AND MORE ESTABLISHED WOODLAND TRANSITIONS TO A MORE OPEN CONDITION. IN THIS STUDENT ECOTONE AREA THERE IS THE OPPORTUNITY FOR MOVEMENT, EDDIES, AND MINGLING.

THE KEY FOCUS IS A FUNCTIONAL PEDESTRIAN CORRIDOR THAT HELPS LINK MANY OF THE SURROUNDING SPACES. THIS IS DESIGNED TO FLOW AND PROVIDE QUICK AND UNIMPEDED MOVEMENT OF STUDENTS, AND TIE INTO THE EXISTING PATH NETWORK. OPPORTUNITIES TO STOP AND USE SITE EDGES ALLOW FOR THE SPACES TO BE MORE THAN CORRIDORS. WALLS AND NOOKS WILL PROVIDE OPTIONS TO USE THE OUTDOOR SPACES, AND PROVIDE LIFE AROUND THE BUILDINGS.

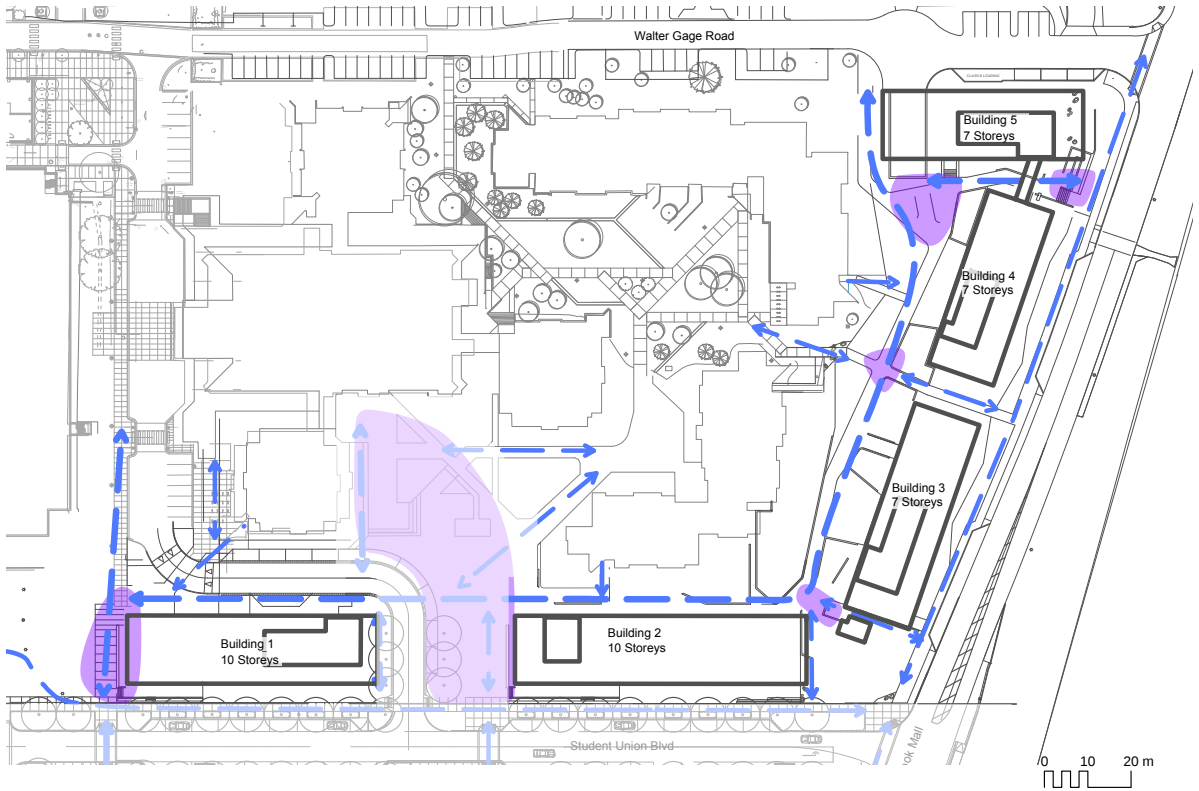
LANGUAGE OF THE LANDSCAPE DESIGN SHIFTS AS ONE MOVES FROM THE ESTABLISHED LANDSCAPE OF THE ADJACENT BUILDINGS TOWARDS THE BUSY MALL OR STUDENT UNION BOULEVARD. THE PLANTING, LANDSCAPE FORMS, AND MATERIALS WILL ALL TRANSITION FROM MORE MORE NATURAL TO MORE FORMAL CHARACTER. THIS WILL FUNCTIONALLY FIT INTO THE NEED FOR FLEXIBLE FORMS TO FIT WITH THE EXISTING EDGE CONDITIONS, AND CHANGE TO THE MORE RATIONAL FORMS OF THE STREET EDGES. THE EXISTING GRID IS REFERENCED, WITH ADJUSTMENT TO THE BUILDING FORMS, AND SMALL TOUCHES TO GIVE CHARACTER SPECIFIC TO THIS AREA.

SCALE OF MATERIALS (PLANTING AND HARD MATERIALS), AND THE SCALE OF SPACES, CHANGE WITH THIS TRANSITION. THE INNER SPACES HAVE LARGER TREES, MORE NATIVE PLANTS, AND MORE INTIMATE SPACES. AS YOU MOVE TOWARDS THE STREETS, THE SPACES OPEN UP AND BECOME MORE POROUS. ELEMENTS OF THE MORE NATURAL FORMS FLOW OUT AND HINT AT THE CHARACTER BEHIND THE BUILDINGS.

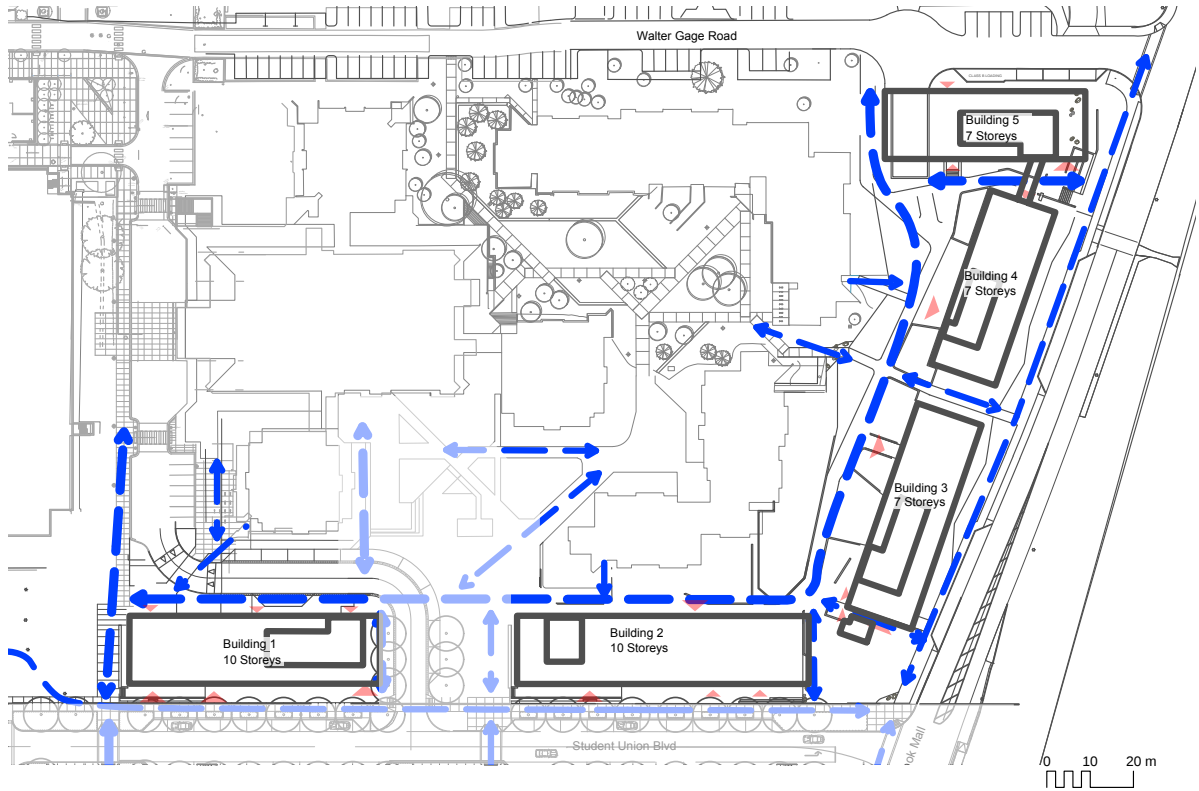
Landscape Analysis Diagrams



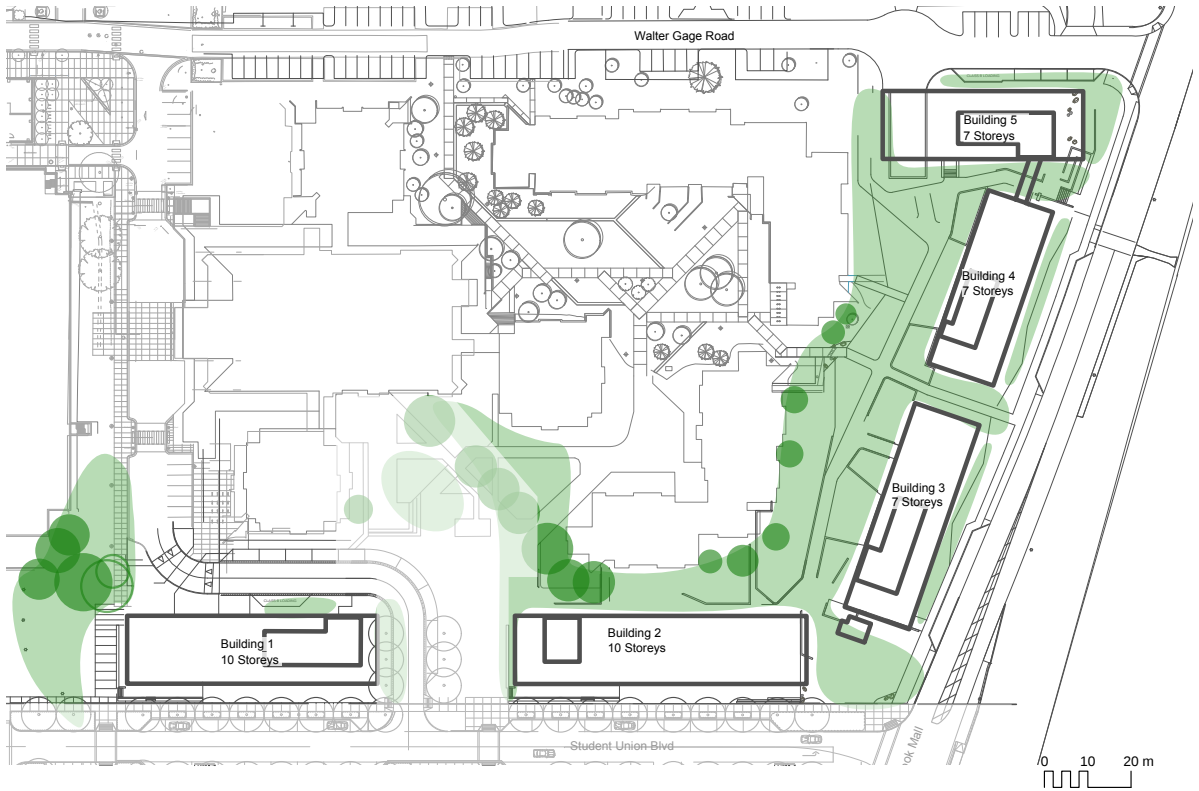
VEHICULAR MOVEMENT



KEY SPACES

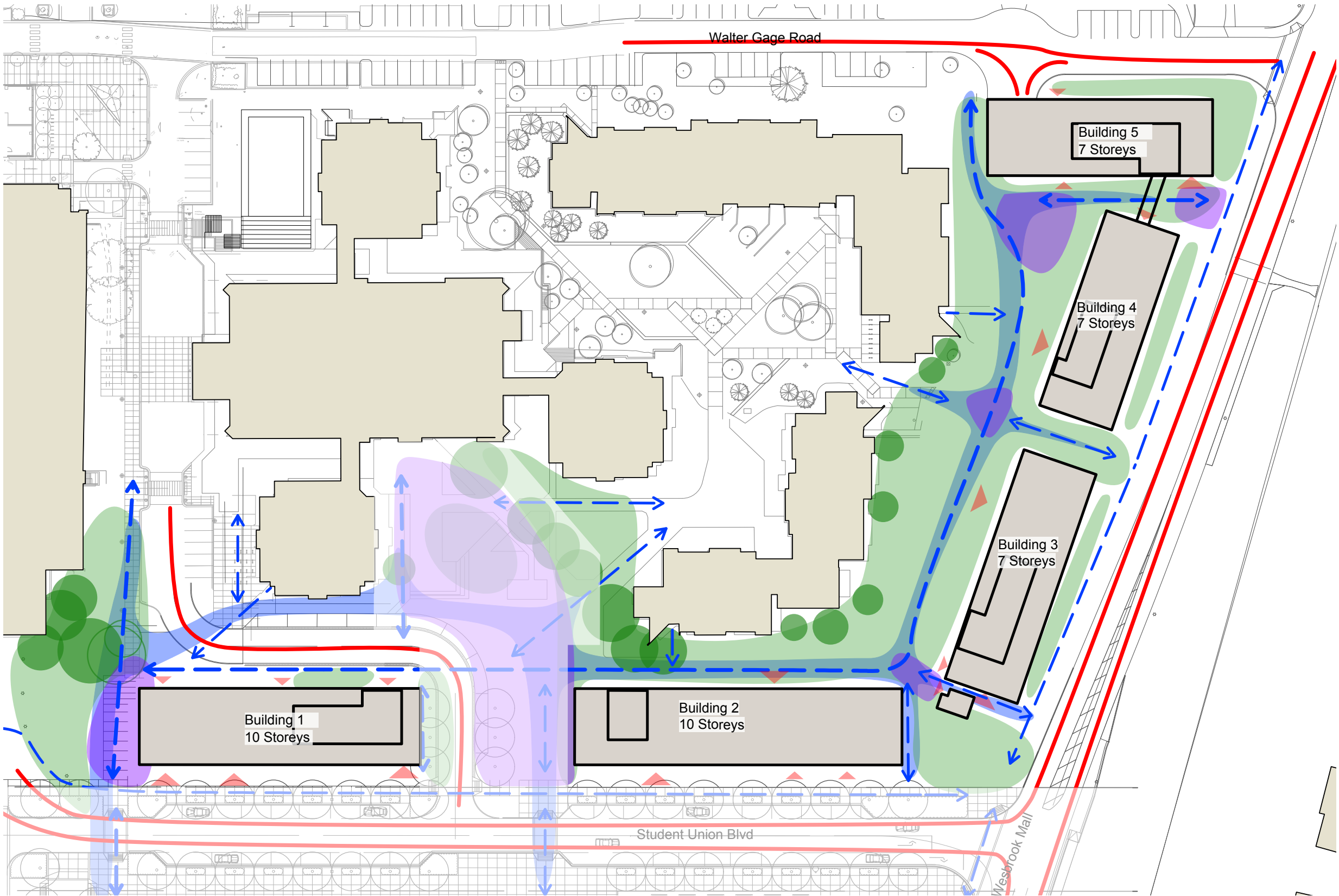


PEDESTRIAN HIERARCHY

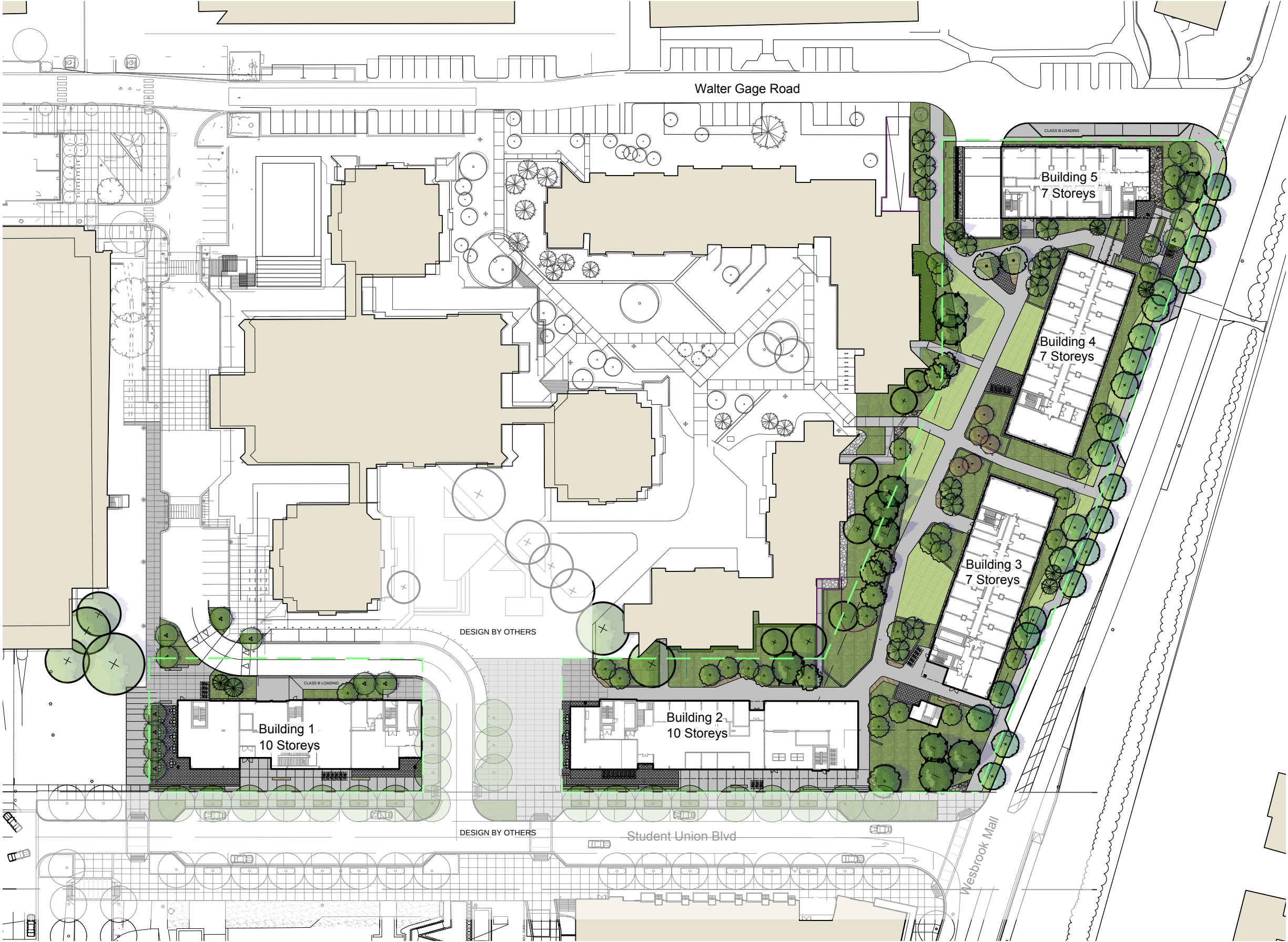


VEGETATION

Conceptual Space Planning



Landscape Site Plan



Enlarged Landscape Plan



Enlarged Landscape Plan



Landscape Concepts



PATHWAYS AND NODES



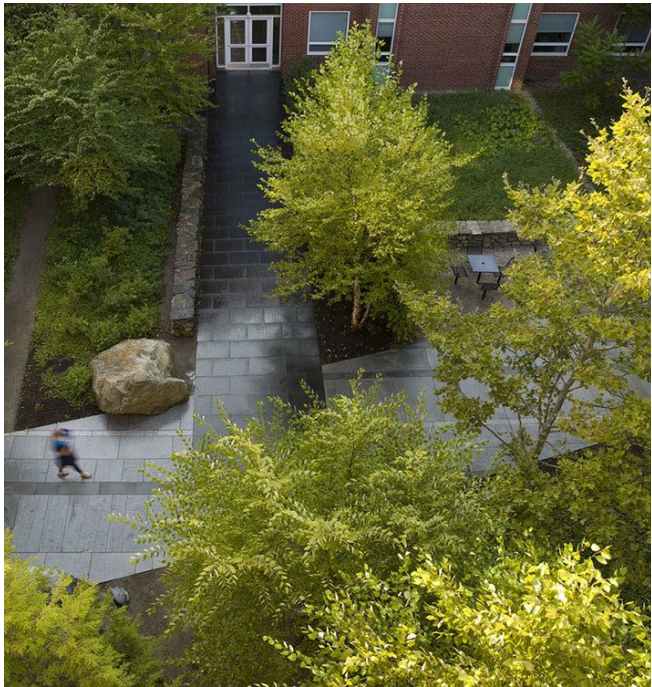
FORM AND CHARACTER, GREENWAY QUALITIES



PATHWAY FLOW, CAMPUS GEOMETRY



SEAT WALLS, SMALL SEATING NOOKS



TREE CANOPY, SCALE OF GREENERY, VISIBILITY



FEATURE SPACES WITH SEAT WALLS



SEATING EDGES AS RETAINING



Landscape Concepts



MATERIALS AND FORMS



TIMBER (COMPOSITE) SEATING ON WALL EDGES



RAISED PLANTERS ON SLAB



NATIVE PLANTS AND ROCK



EVERGREEN AND SHADE



PLAZA CANOPY



CONCRETE WALLS



PAVING MATERIALS



UBC STANDARD BIKE RACK



RESYSTA COMPOSITE DECK FOR CUSTOM BENCHTOPS

Plant Materials



EVERGREEN AND SHADE



Dicentra formosa
Bleeding Heart



Hosta sieboldianai
Hosta



Pachysandra terminalis
Japanese Spurge



Polystichum munitum
Western Sword Fern



LAYERED PLANTINGS



Lavandula angustifolia
English Lavender



Lonicera pileata
Box-Leaf Honeysuckle

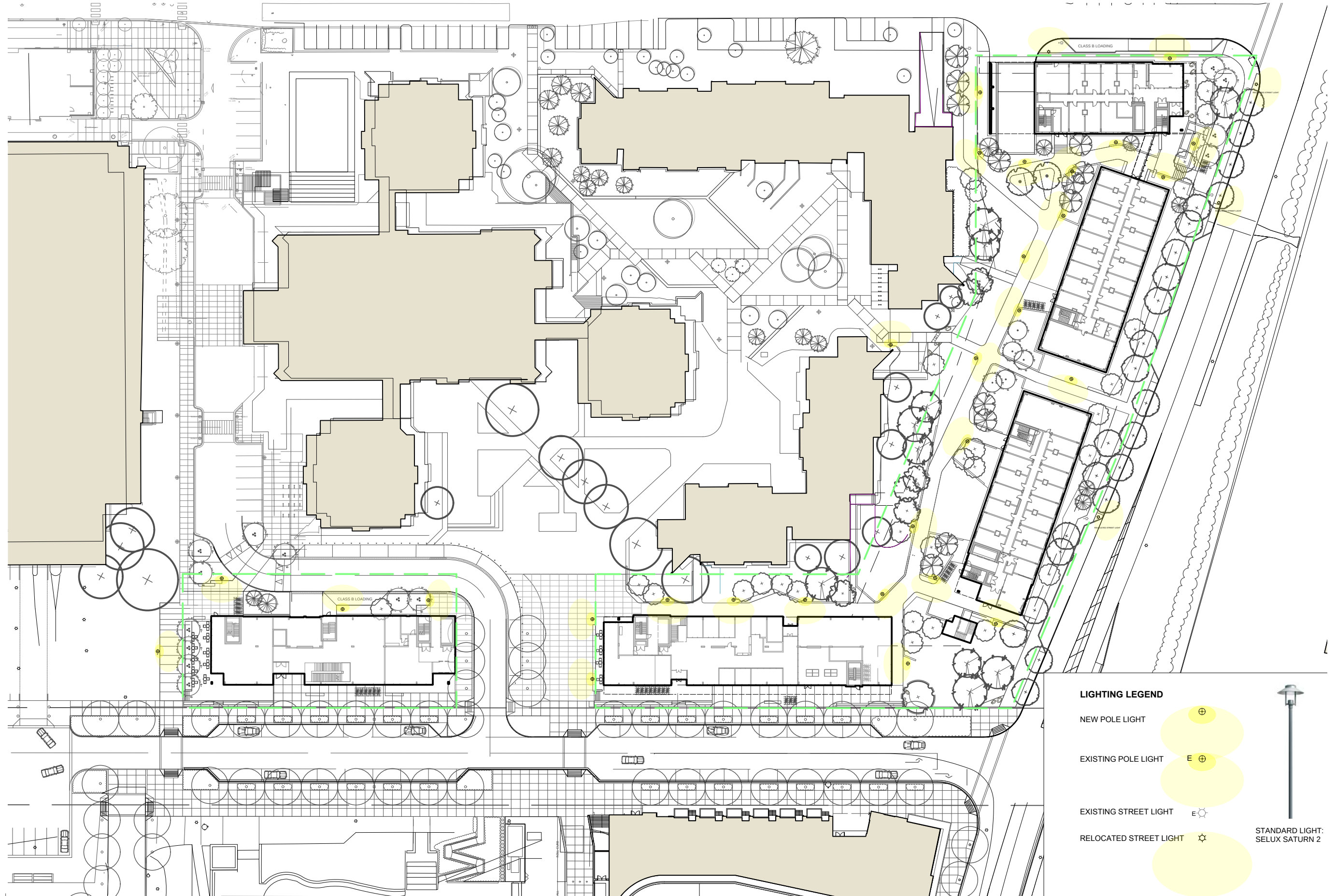


Ceanothus 'Victoria'
California Lilac



Taxus baccata 'Fastigiata'
Irish Yew

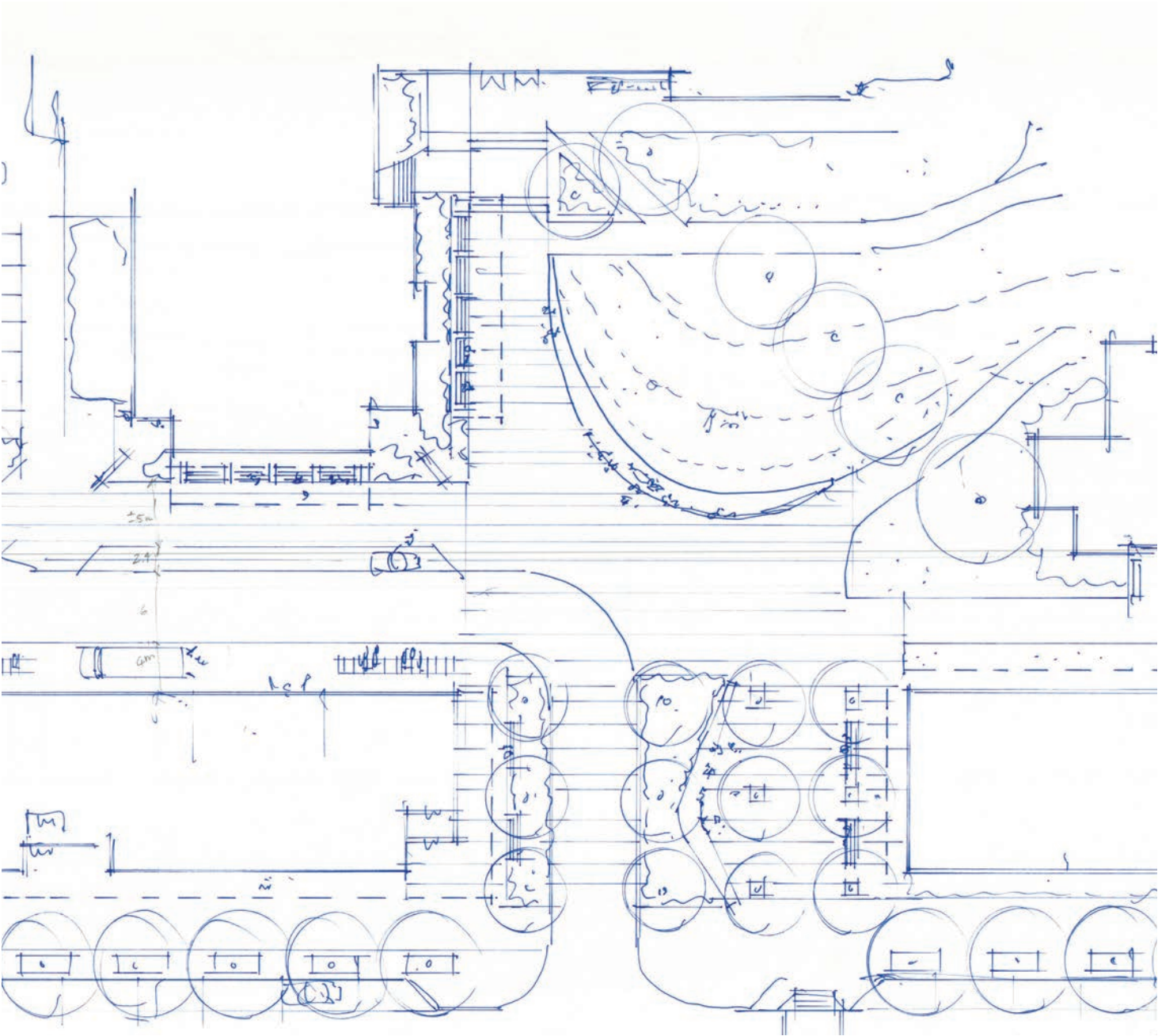
PLANT LIST					
TREES					
TREES QTY.	BOTANICAL NAME	COMMON NAME	SIZE	SPACING	
10	Abies grandis	Grand Fir	4.5m ht., B&B	as shown	
28	Acer circinatum	Vine Maple	5cm cal., B&B	as shown	
14	Acer griseum	Paper Bark Maple	5cm cal., B&B	as shown	
5	Acer palmatum 'Osakazuki'	Osakazuki Japanese Maple	3m ht., B&B	as shown	
23	Acer platinoides	Norway Maple	6cm cal., B&B	as shown	
1	Cercis canadensis	Eastern Redbud	5cm cal., B&B	as shown	
2	Ginkgo biloba	Ginkgo Tree	6cm cal., B&B	as shown	
8	Picea breweriana	Brewers Spruce	3.5m ht., B&B	as shown	
12	Stewartia pseudocamellia	Japanese Stewartia	5cm cal., B&B	as shown	
6	Styrax japonica	Japanese Styrax	6cm cal., B&B	as shown	
SHRUBS					
	Buxus microphylla	Little Leaf Boxwood	#5 pot	18" o.c	
	Ceanothus thyrsiflorus 'Victoria'	Victoria California Lilac	#5 pot	36" o.c	
	Cornus stolonifera	Red Osier Dogwood	#5 pot	36" o.c	
	Forsythia x intermedia	Forsythia	#5 pot	48" o.c	
	Ilex crenata 'Convexa'	Japanese Holly	#3 pot	30" o.c	
	Lonicera piliata	Box-Leaf Honeysuckle	#3 pot	30" o.c	
	Polystichum munitum	Western Sword Fern	#1 pot	24" o.c	
	Rhododendron 'Crete'	Pink Rhododendron	#5 pot	36" o.c	
	Rhododendron 'Hotei'	Yellow Rhododendron	#5 pot	36" o.c	
	Rhododendron 'Ken Janeck'	Pink Yaku Rhododendron	#3 pot	24" o.c	
	Sarcococca hookerana 'Humilis'	Himalayan Sweet Box	#2 pot	24" o.c	
	Skimmia japonica	Japanese Skimmia	#2 pot	24" o.c	
	Spiraea x bumulda 'Goldflame'	Goldflame Spiraea	#2 pot	24" o.c	
	Taxus baccata 'Fastigiata'	Irish Yew	1.2m ht., B&B	24" o.c	
GROUND COVERS AND VINES					
	Fragaria chiloensis	Beach Strawberry	4"(10cm) pot	15" o.c	
	Rubus calycinoides	Emerald Carpet	4"(10cm) pot	15" o.c	
	Oxalis crassipes	Redwood Spurge	4"(10cm) pot	15" o.c	
	Pachysandra terminalis	Japanese Spurge	4"(10cm) pot	15" o.c	
PERENNIALS, GRASSES, BULBS, AND ANNUALS					
	Dicentra formosa	Western Bleeding Heart	#1 pot	18" o.c	
	Echinacea purpurea	Purple Coneflower	#1 pot	18" o.c	
	Hemerocallis 'Stella D'Oro'	Day Lily	#1 pot	18" o.c	
	Hosta sieboldiana	Hosta	#1 pot	18" o.c	
	Lavandula angustifolia	English Lavender	#1 pot	18" o.c	
	Liriope muscari	Lily-turf	#1 pot	18" o.c	
	Stipa tenuissima	Mexican Feather Grass	#1 pot	24" o.c	



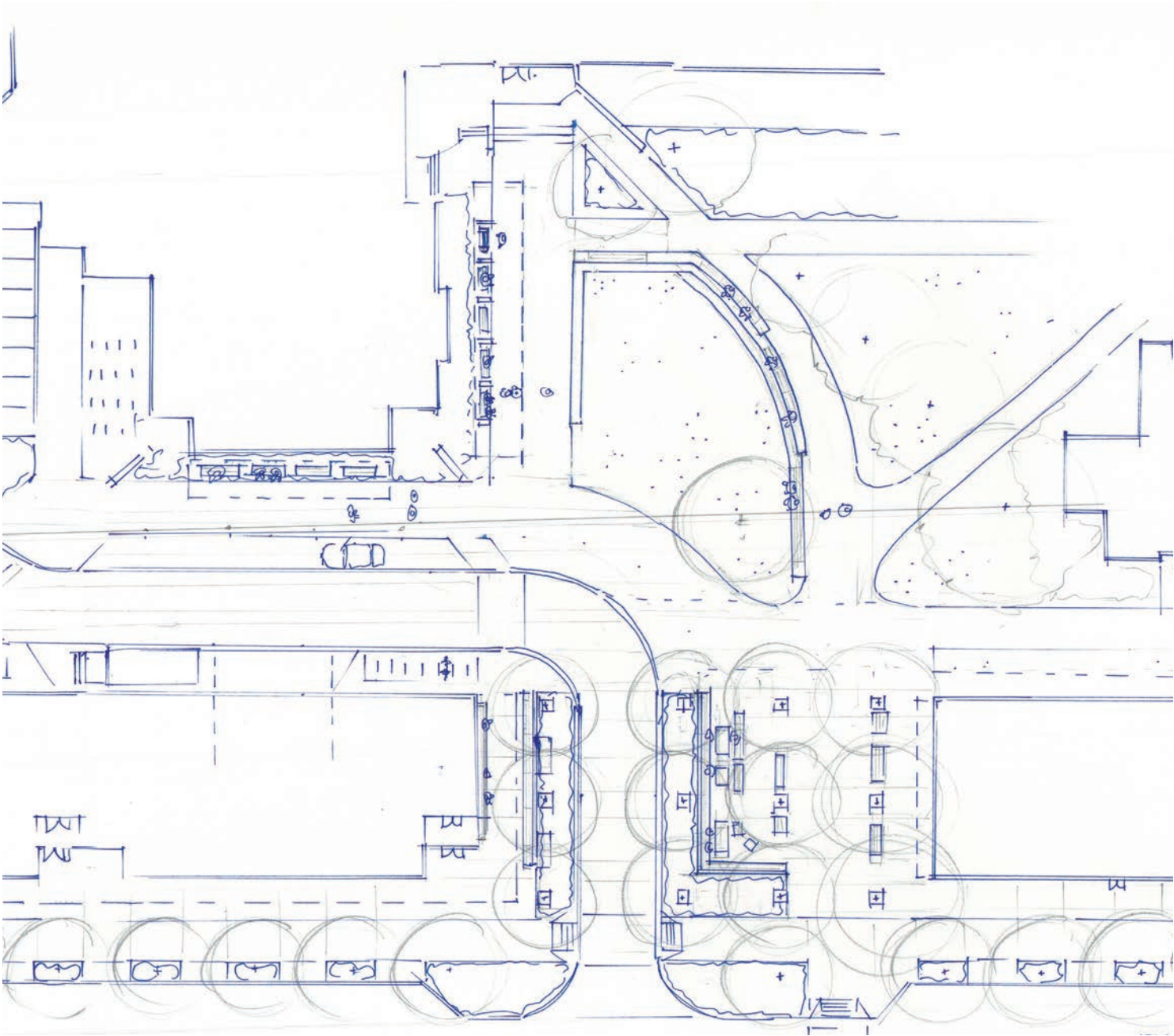
Existing Trees



Design Explorations

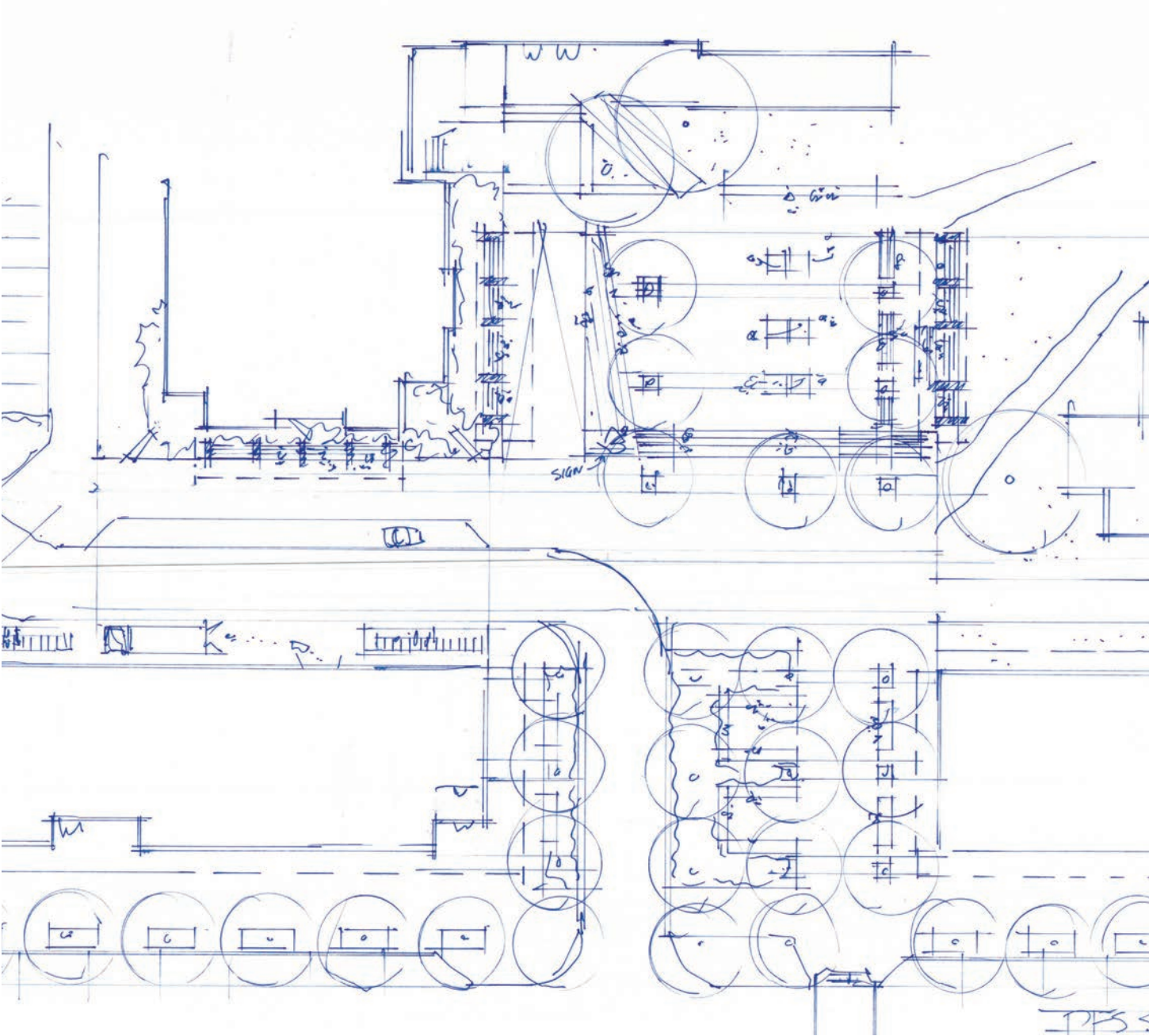


Concept A
passive greenspace, flexible seating

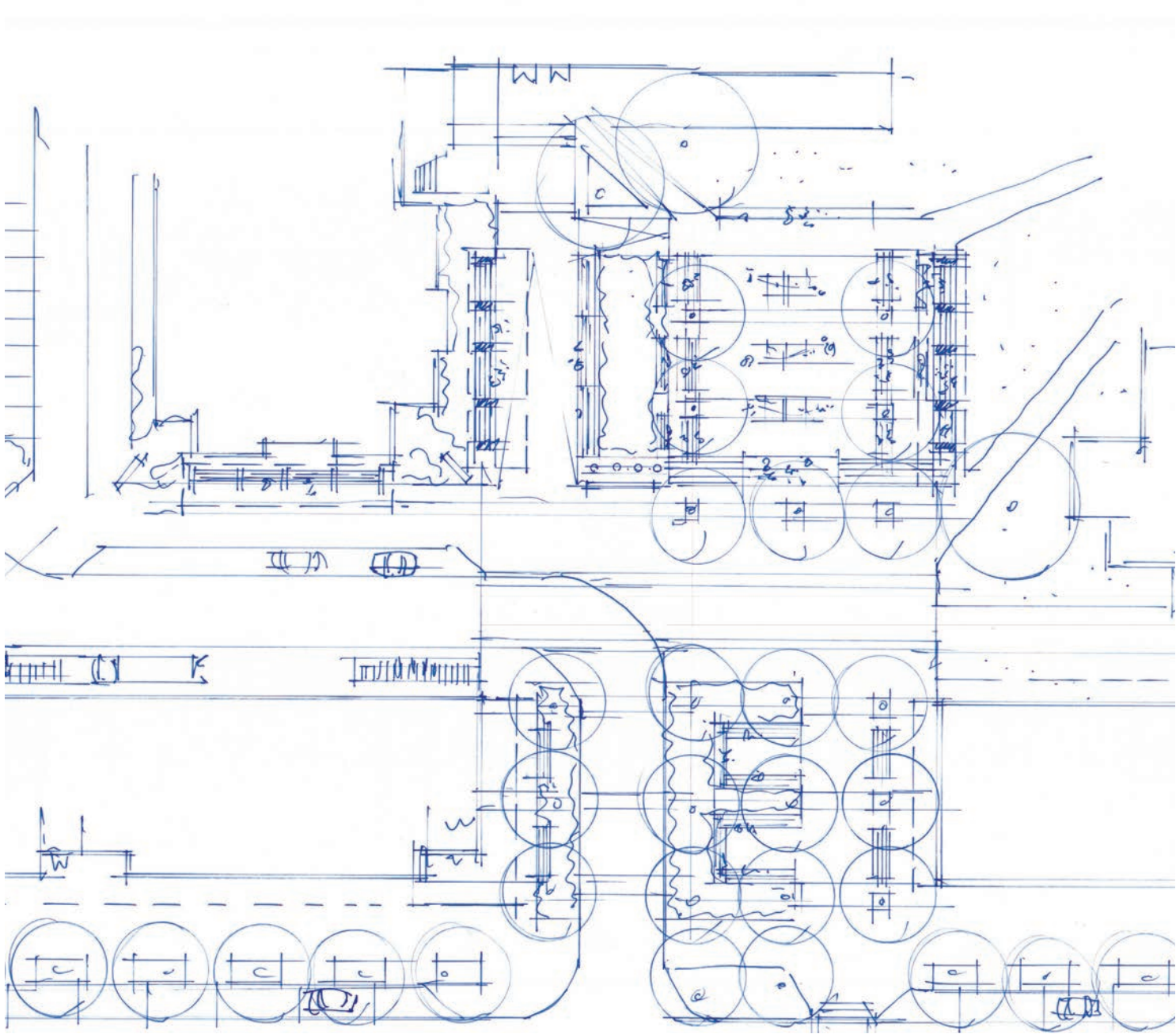


Concept B
passive greenspace, hugging the street

Design Explorations



Concept C
active, integrated terrace

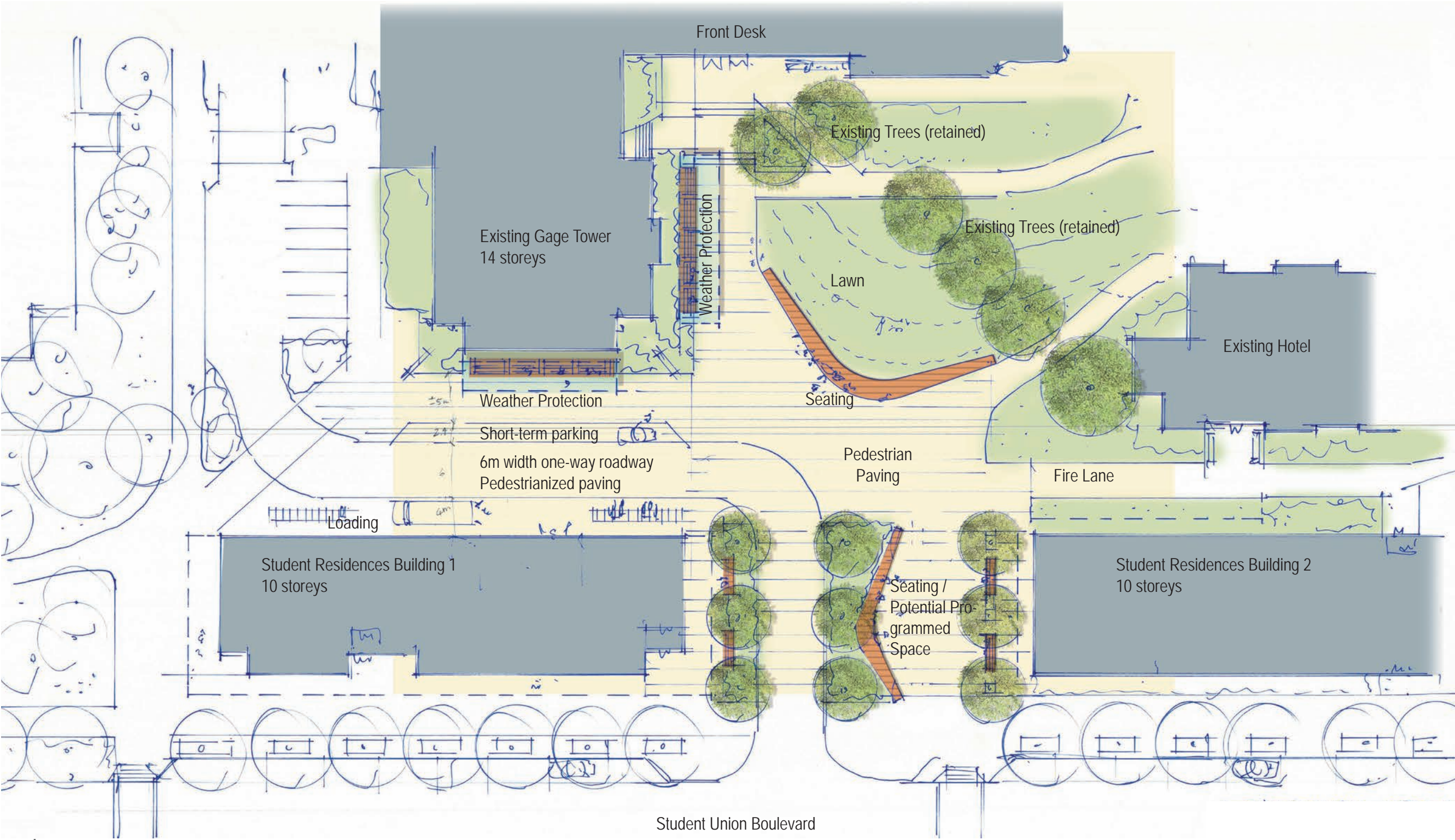


Concept D
active, separated terrace

Preferred Design Option

Design Objectives:

- Provide a 'front porch' for Gage Residences, and a 'readable' landscape supporting it.
- Provide passive open space.
- Provide multiple seating opportunities, sun and shade.
- Make use of sun pockets, summer (expansive) and winter (limited).
- Allow free, accessible movement across circulation routes; provide suitable hard surfaces widths.
- Provide direct, largely weather-protected route to existing Gage 'Front Desk' building.
- Provide seating and programmable area associated with new residences.
- Manage pedestrian / vehicle conflicts by slowing down traffic, prioritizing pedestrian crossing.
- Develop design language that supports and builds upon existing Gage Residences, and proposed Student Residences.
- Maintain existing trees where possible and appropriate.



Preferred Design Option

